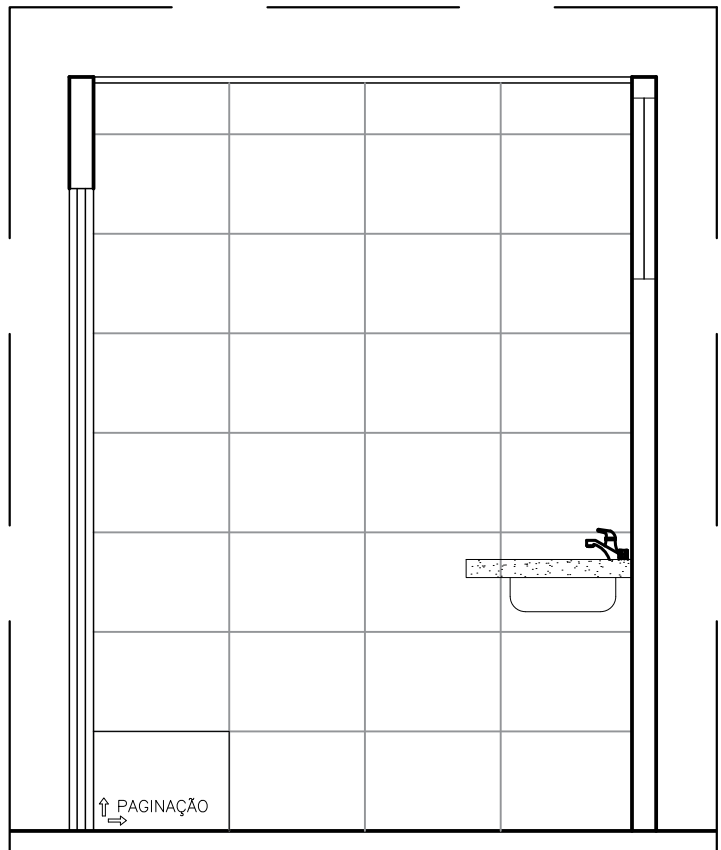
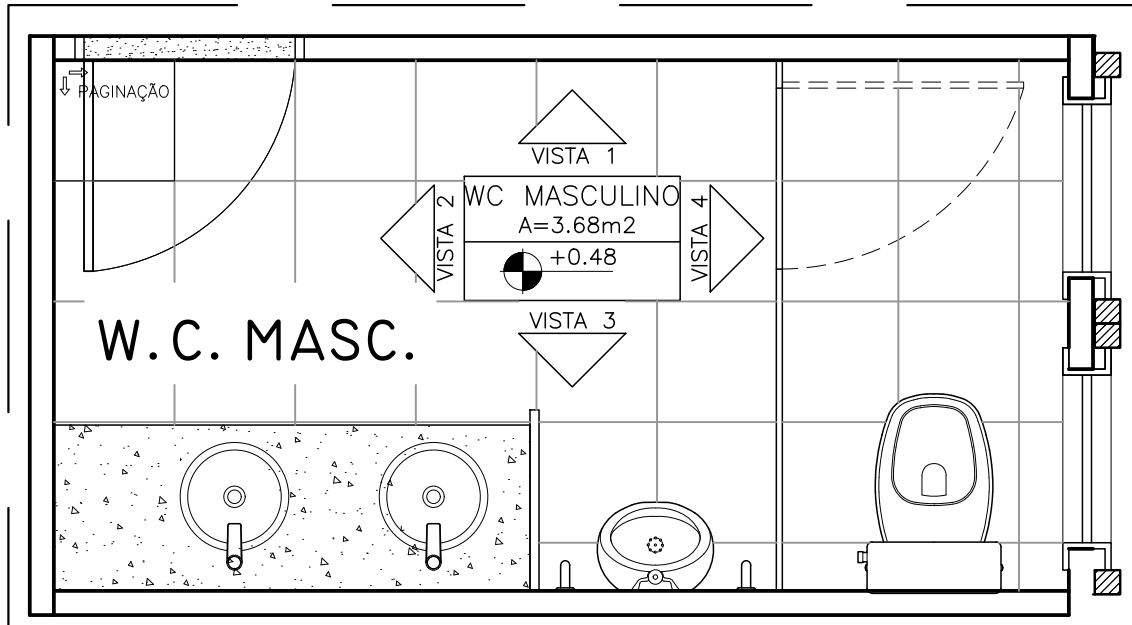


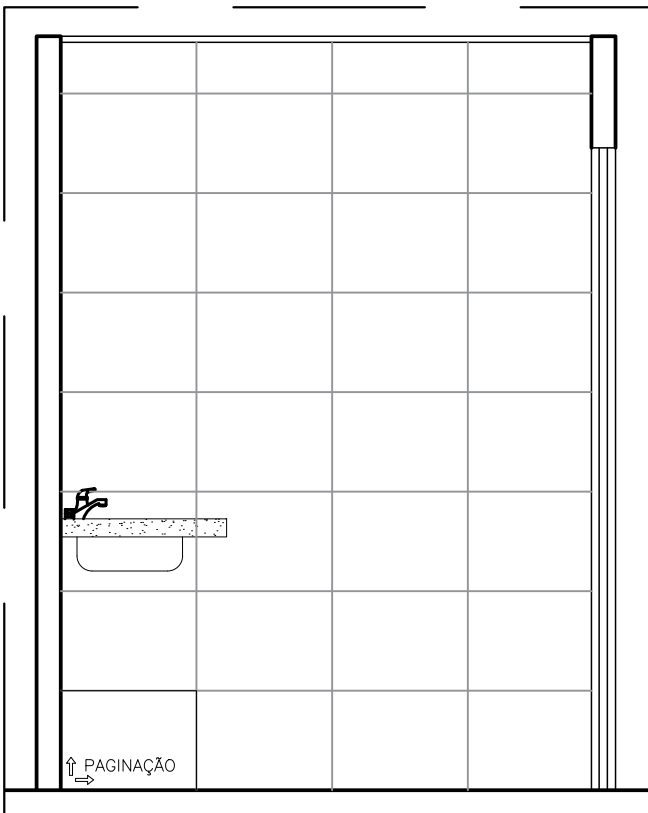
18 DETALHE WC FEMININO: PLANTA BAIXA
ESCALA: 1/25



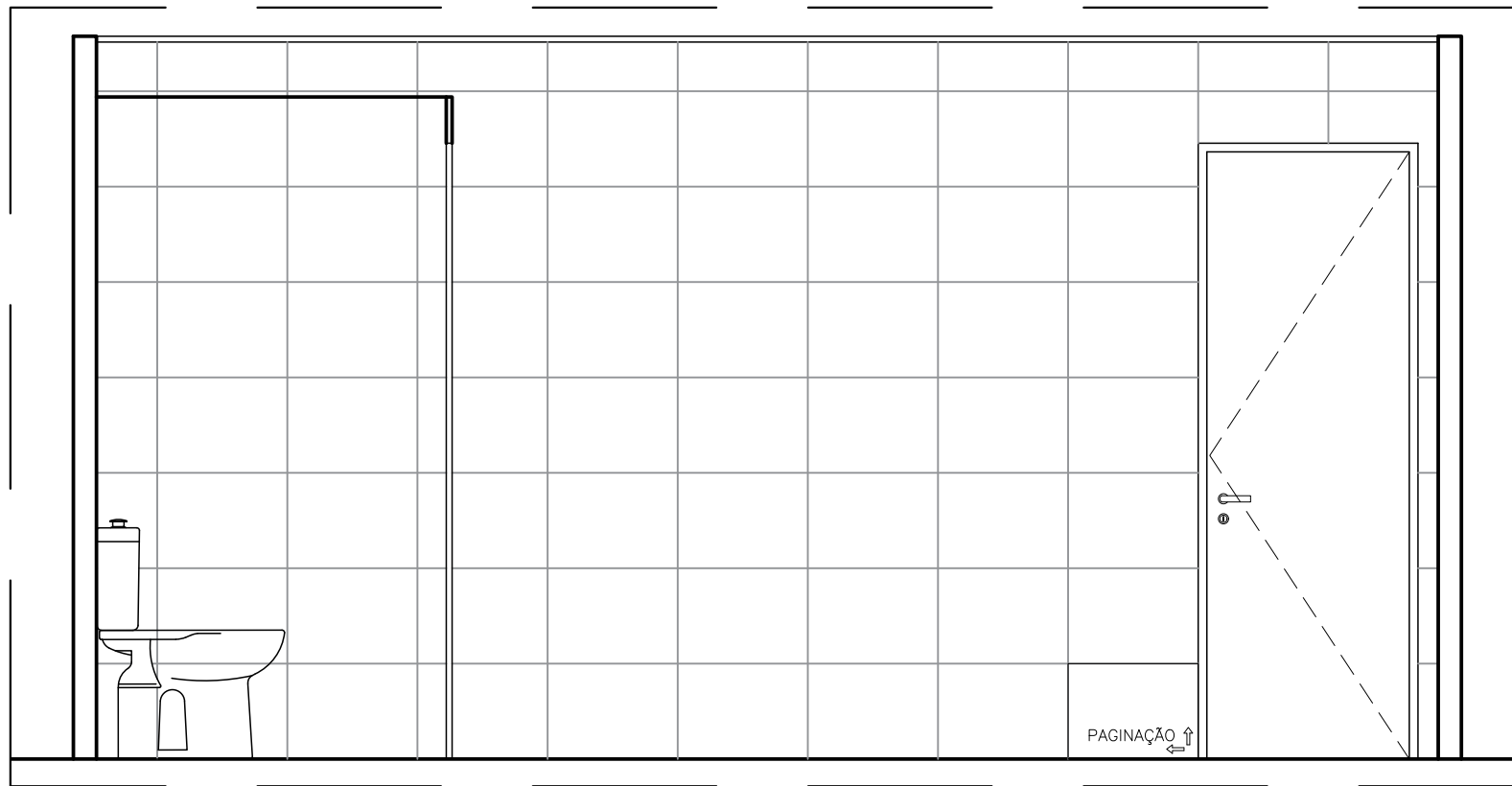
20 DETALHE WC FEMININO: VISTA 02
ESCALA: 1/25



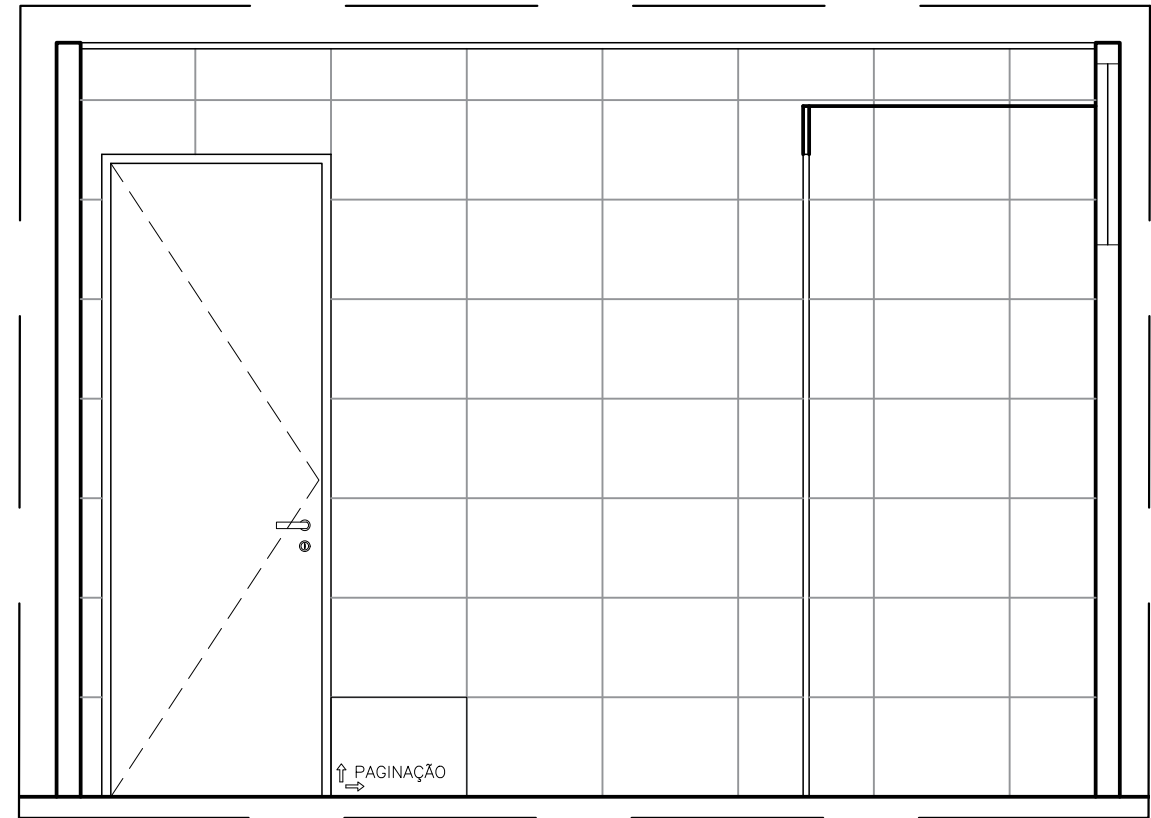
23 DETALHE WC MASCULINO: PLANTA BAIXA
ESCALA: 1/25



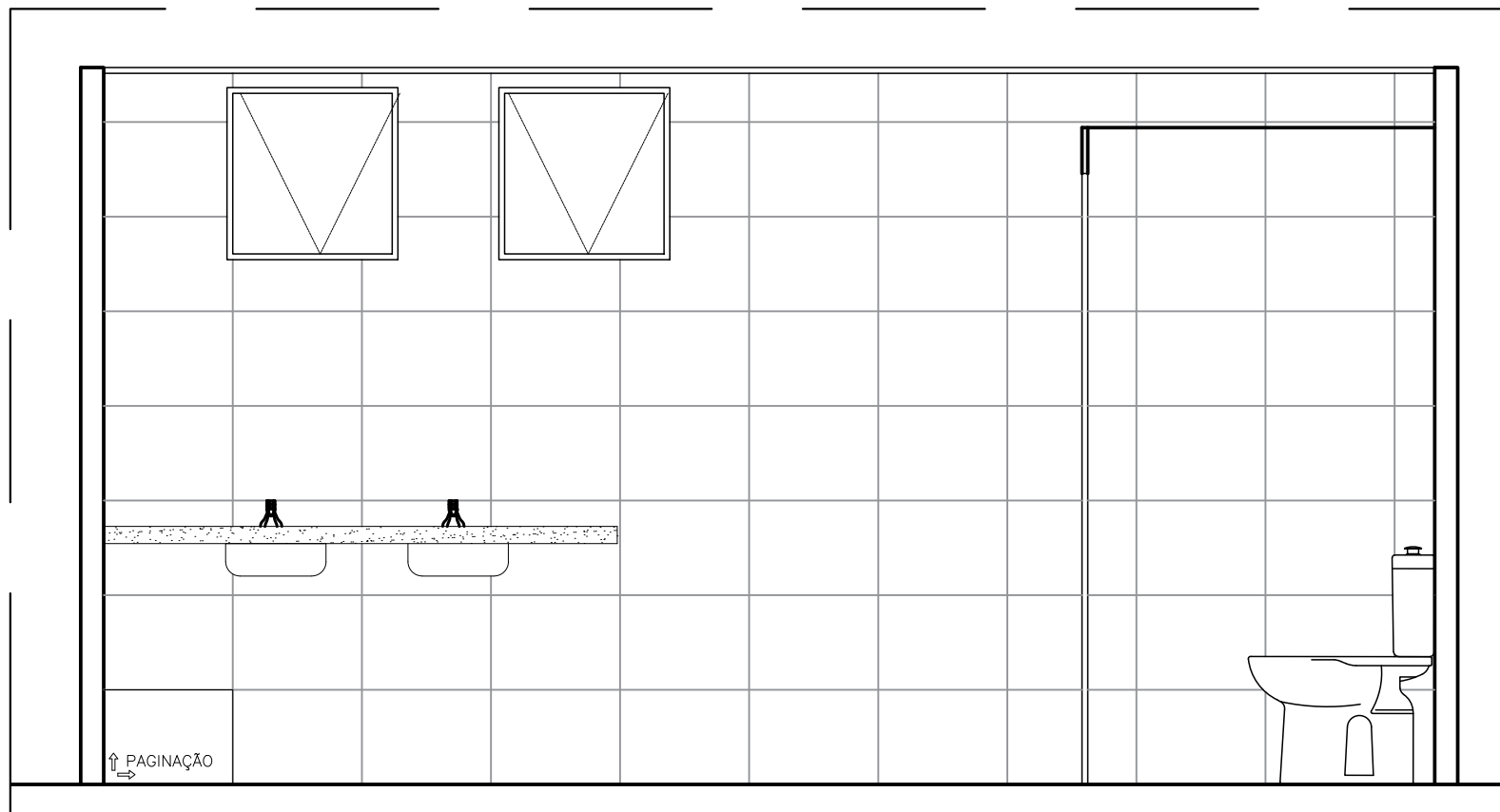
25 DETALHE WC MASC.: VISTA 02
ESCALA: 1/25



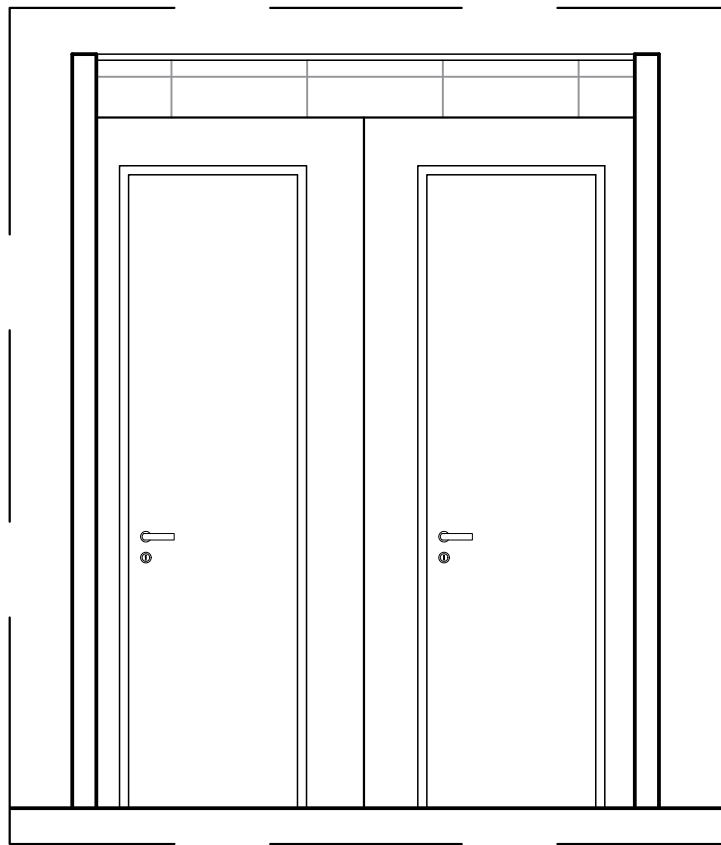
19 DETALHE WC FEMININO: VISTA 01
ESCALA: 1/25



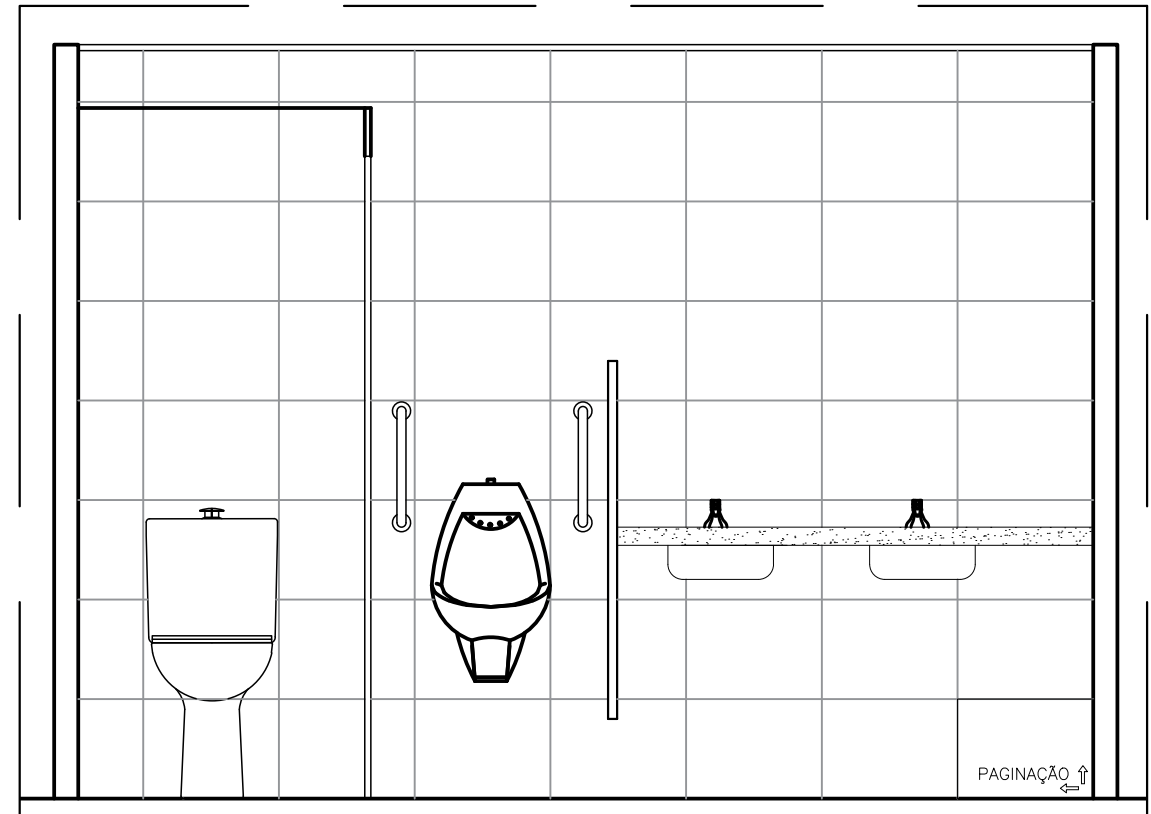
24 DETALHE WC MASC.: VISTA 01
ESCALA: 1/25



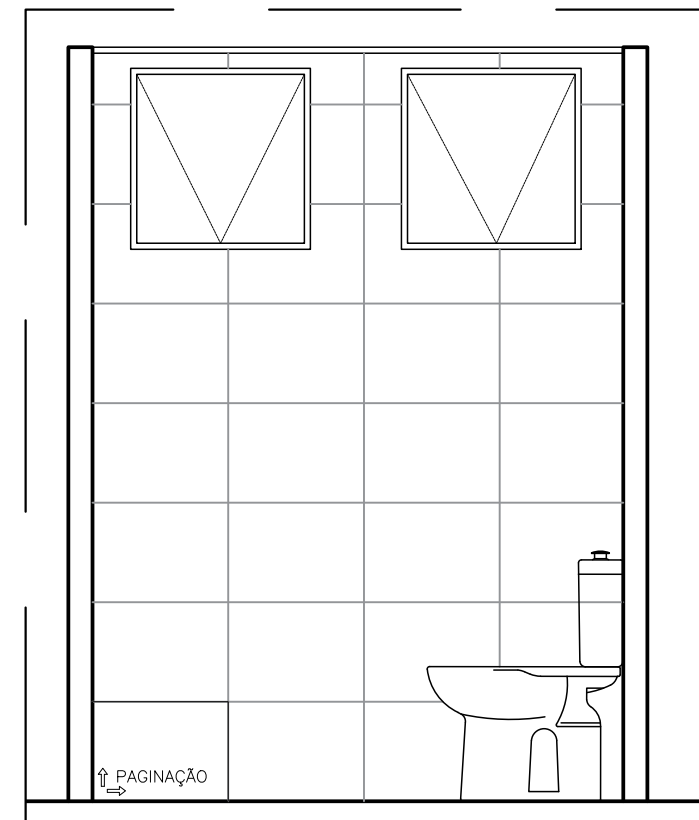
21 DETALHE WC FEMININO: VISTA 03
ESCALA: 1/25



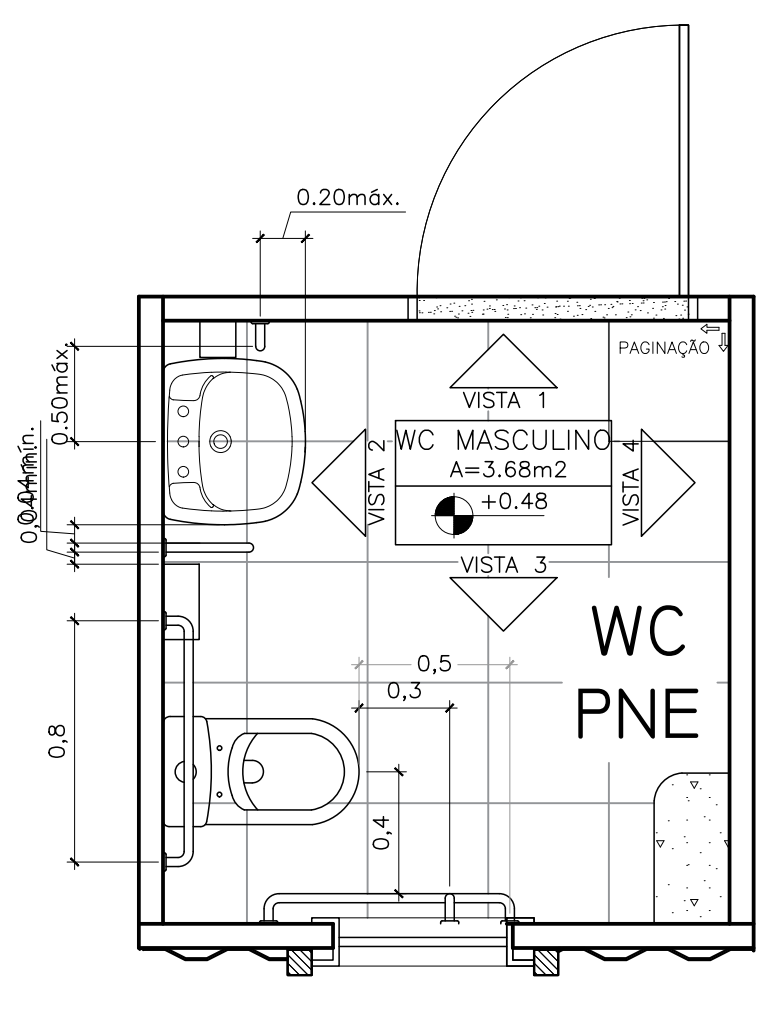
22 DETALHE WC FEMININO: VISTA 04
ESCALA: 1/25



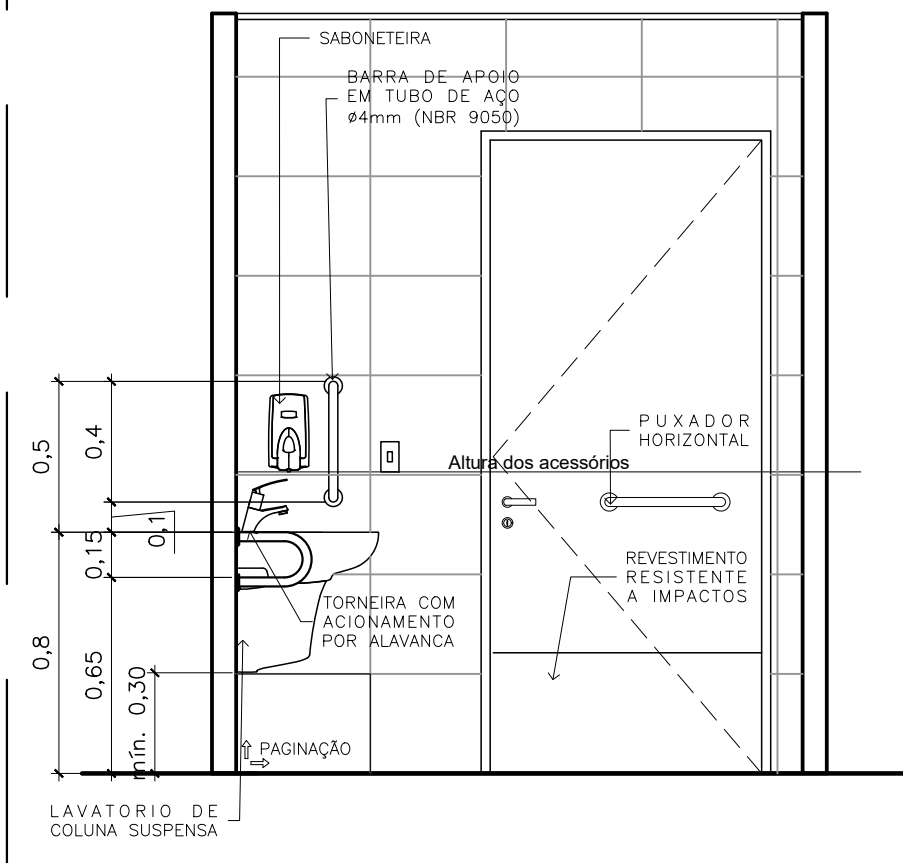
26 DETALHE WC MASC.: VISTA 03
ESCALA: 1/25



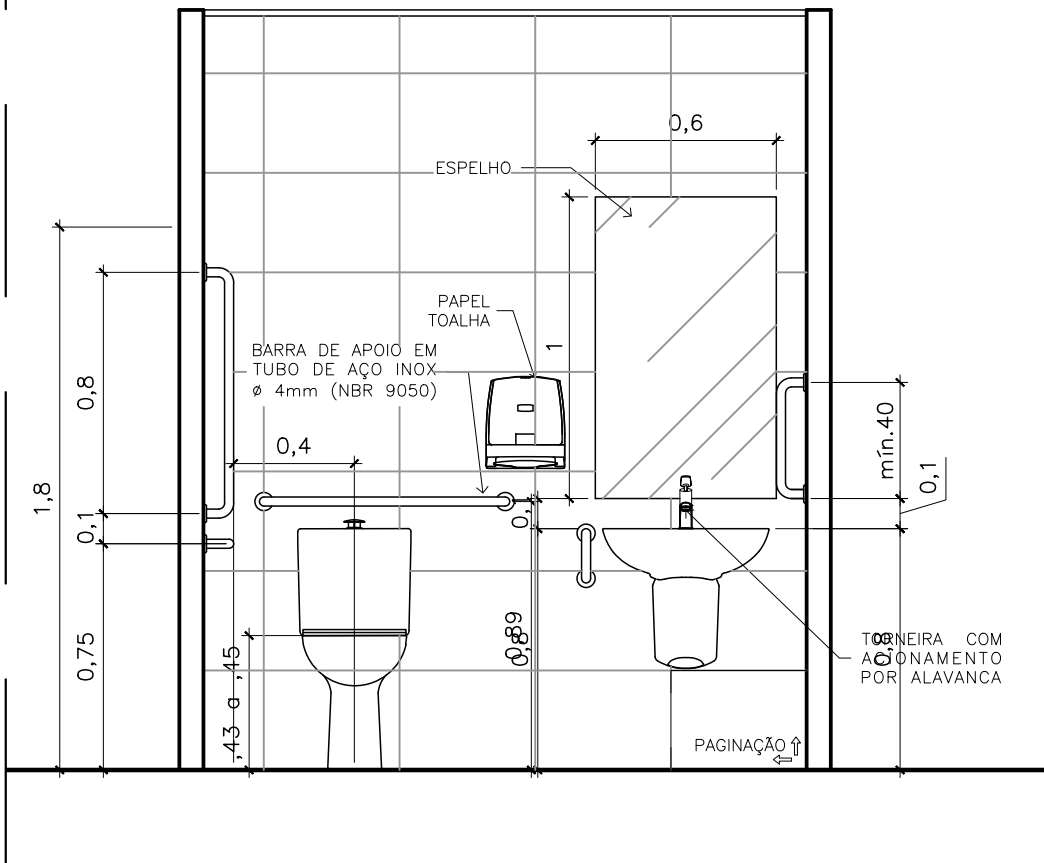
27 DETALHE WC MASC.: VISTA 04
ESCALA: 1/25



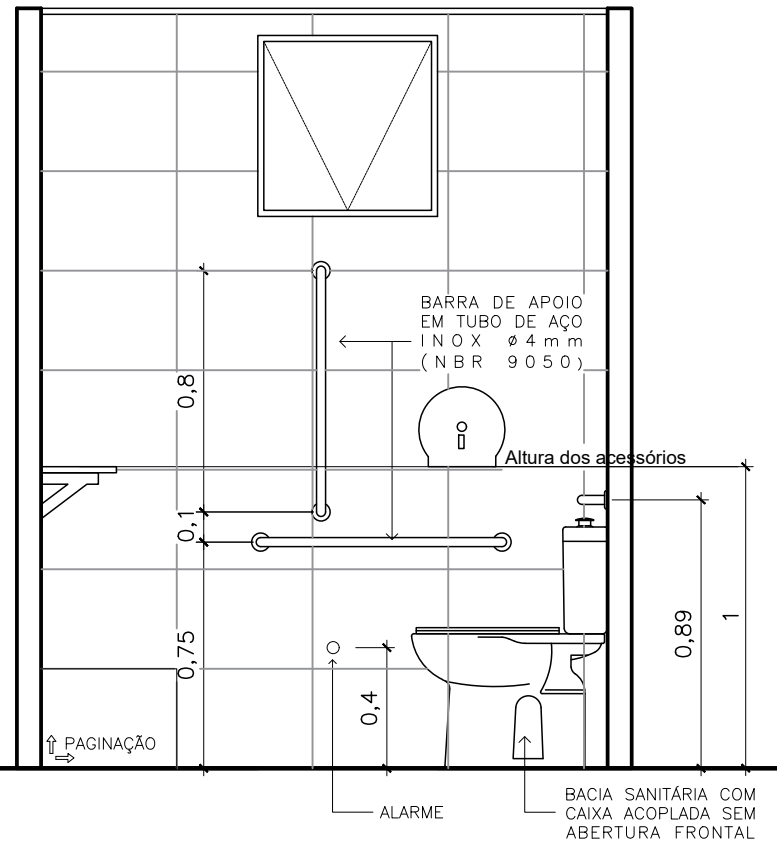
28 DETALHE WC FPNE: PLANTA BAIXA
ESCALA: 1/25



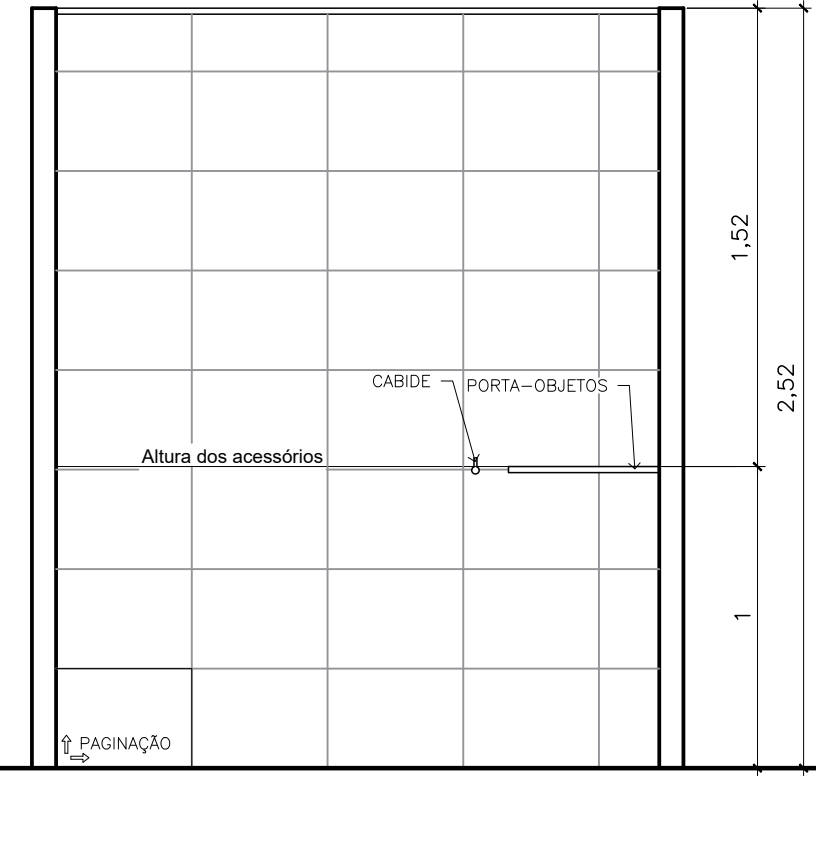
29 DETALHE WC PNE: VISTA 01
ESCALA: 1/25



30 DETALHE WC PNE: VISTA 02
ESCALA: 1/25



31 DETALHE WC PNE: VISTA 03
ESCALA: 1/25



32 DETALHE WC PNE: VISTA 04
ESCALA: 1/25

ANEXO VII A



TIPO DO PROJETO:
PROJETO ARQUITETÔNICO DE CONSTRUÇÃO

NOME DO PROJETO:
PROMOTORIA DE JUSTIÇA BACANGA

AUTOR DO PROJETO:
ALBERTO PIRES PINTO FILHO
Arquiteto e Urbanista - CAU A115270-0

ENDEREÇO:
RUA D 98/118, S/N, ANJO DA GUARDA - SÃO LUÍS

PROPRIETÁRIO:
PROCURADORIA GERAL DE JUSTIÇA-PGJ

TÍTULO:
PLANTA DE DETALHAMENTO DE BANHEIROS

ÁREA TERRENO: 630,00 m²	ÁREA CONSTRUÍDA: 148,71 m²	ÁREA LIVRE: 349,95 m²
COLABORADOR: LARA MARTINS	RECUBO FRONTAL: 7,25 m	GABARITO: TÉRREO
ESCALA: INDICADA	DATA: 20/10/2020	